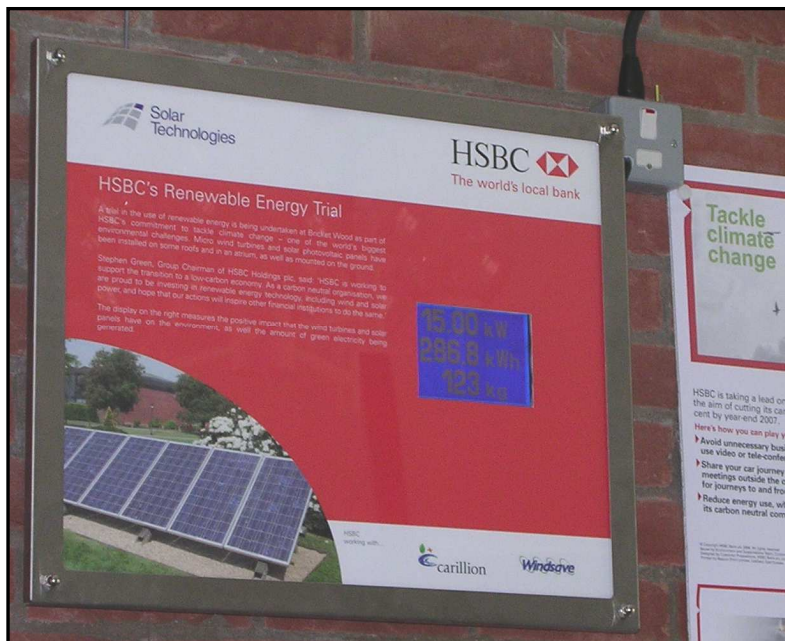
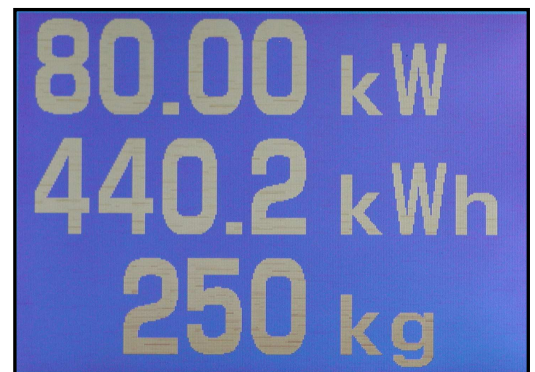


The **Micha** Power Generation Display Units are designed to dynamically present output figures for Instantaneous Power and Total Energy typically produced by solar panels and wind turbines.

In addition, a calculated CO₂ Saving is shown, based on a standard government formula.

A simple 2-wire connection from the output of an energy meter plus mains power is all that is required to run the displays, and as well as being functional, they can be used to enhance the 'green credentials' of companies keen to demonstrate their commitment to the environment.

The clear, backlit, LCD display has high-legibility 23mm characters designed to be viewed under a variety of conditions.



The displays are available in two stock sizes; 422mm x 303mm and 605mm x 505mm - the smaller size being suitable for A3 artwork. Both can be flush or surface mounted with cable access provided in the back, top and bottom sides of the back-boxes.

The units include four parallel inputs accepting pulses from multiple energy meters. The value of the pulses can be programmed by the user to represent 1Wh up to 90kWh, with Instantaneous Power automatically calculated. All settings are stored in non-volatile memory.

Main Specifications:

Supply Input Voltage Range:	90VAC to 250VAC
Number of Inputs:	4
Input specification:	Volt-Free N/O inputs, minimum mark-space 100mS:100mS
Operating Temperature Range:	0°C to +50°C
Enclosure:	Painted Steel back-box, Stainless Steel bezel, acrylic fascia.
Part numbers:	101 820 101 640
Max display graphic dimension:	384mm x 261mm 545mm x 445mm



Both units share a common control pcb which is set up either using the on-board switches, or using an optional plug-in hand-held unit. With the display in set-up mode, input-pulse unit values can be set to any figure between 1 and 9 in the following ranges: 1Wh, 10Wh, 100Wh, 1kWh and 10kWh. Instantaneous Power is calculated over a user pre-settable period between 1 and 60 minutes - to allow for a wide range of input pulse frequencies - and a Total Energy Generated figure can be pre-loaded if the figure is known for an existing installation.

The energy-meter pulse inputs are optically isolated from the display circuit and on-board push-button switches are provided for manually testing the inputs.

With both sized units, the back-box is smaller than the display panel allowing the equipment to be surface mounted and maintain a neat appearance. User generated artwork is held firmly in place between two sheets of clear acrylic, with a brushed stainless-steel bezel providing a clean finish to the display to fit in with many decors.

