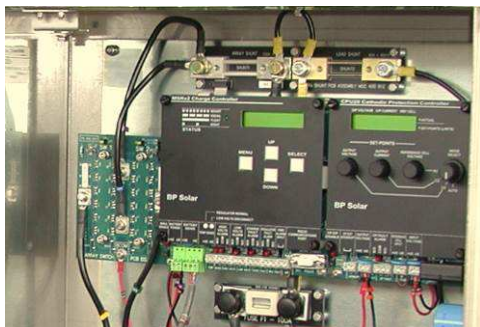


PCB Assembly Name:	CPU20 12V Control PCB Assembly
PCB Assembly Part Number:	400936
This version/issue:	1
Bare PCB Part Number:	300849-2
First produced:	23-06-2003 (this issue)
Dimensions:	160 x 130 x 50mm
Weight (approx.):	0.3kg
Used on:	PN 101285: MSR _x 2-82 & CPU20 (12V) PN 101515: MSR _x 4 & CP20A 12V
Manufacturer:	The Micha Design Company Limited
Country of Origin:	United Kingdom
Notes:	Pcb assembly includes display. (24V version: PN 400849)
Status:	Service replacements available to order



Typical installation of PN 400936 (shown on right including fascia panel).