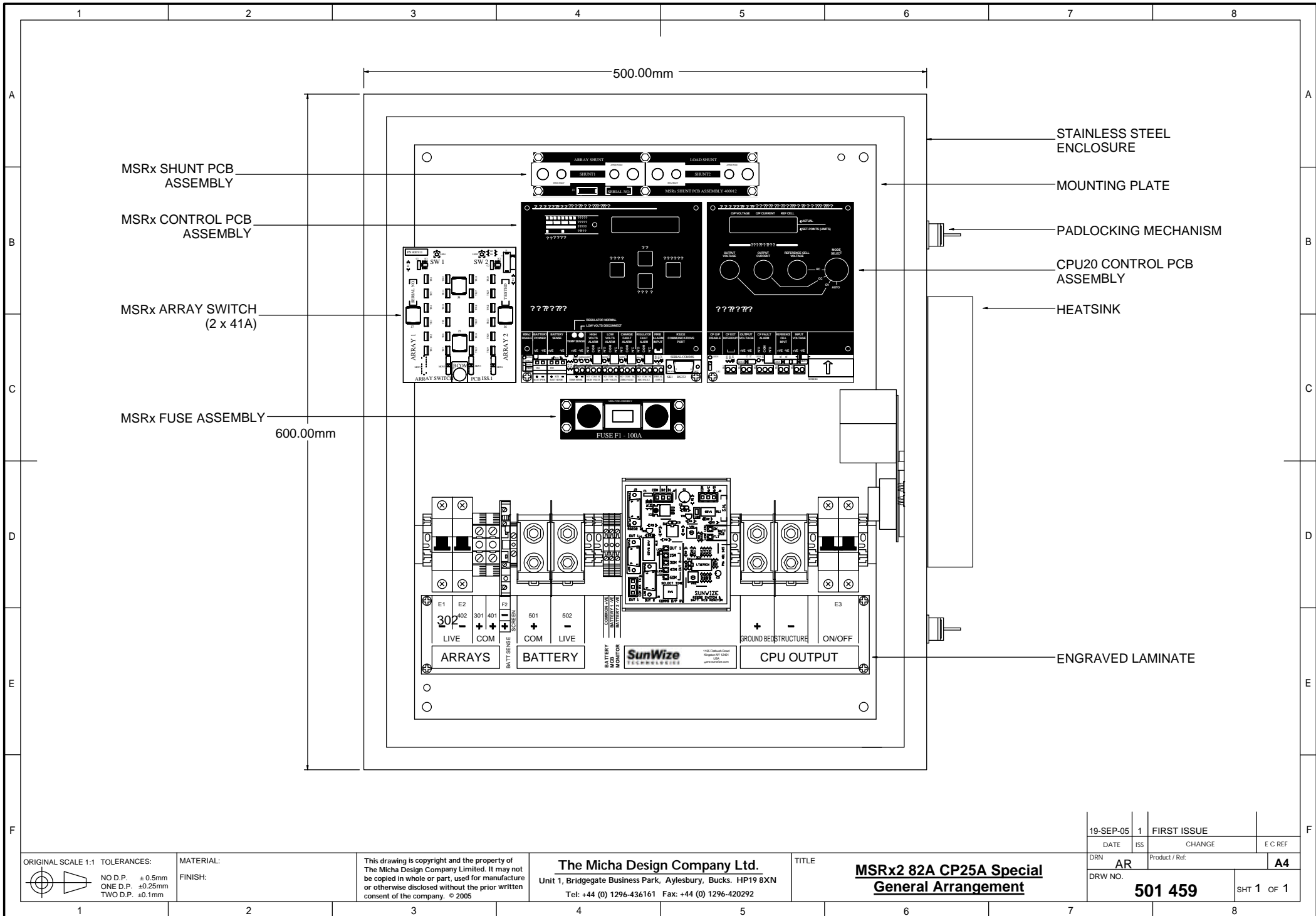


PCB Assembly Name:	RS232 Switch & Batt MCB Monitor
PCB Assembly Part Number:	401145
This version/issue:	B
Bare PCB Part Number:	301145-1
First produced:	24 August 2005
Dimensions:	108mm x 92mm
Weight (approx.):	85gm (excluding DIN-rail carrier)
Used on:	PN 101552 (MSRx2 82A CP25A special) for Sunwize Technologies
Manufacturer:	The Micha Design Company Limited
Country of Origin:	United Kingdom
Notes:	Refer drawing 501459 below.
Status:	Current version.



MSRx SHUNT PCB ASSEMBLY

MSRx CONTROL PCB ASSEMBLY

MSRx ARRAY SWITCH (2 x 41A)

MSRx FUSE ASSEMBLY

STAINLESS STEEL ENCLOSURE

MOUNTING PLATE

PADLOCKING MECHANISM

CPU20 CONTROL PCB ASSEMBLY

HEATSINK

ENGRAVED LAMINATE

ORIGINAL SCALE 1:1 TOLERANCES:
 NO D.P. ±0.5mm
 ONE D.P. ±0.25mm
 TWO D.P. ±0.1mm

MATERIAL:
 FINISH:

This drawing is copyright and the property of The Micha Design Company Limited. It may not be copied in whole or part, used for manufacture or otherwise disclosed without the prior written consent of the company. © 2005

The Micha Design Company Ltd.
 Unit 1, Bridgegate Business Park, Aylesbury, Bucks. HP19 8XN
 Tel: +44 (0) 1296-436161 Fax: +44 (0) 1296-420292

TITLE
MSRx2 82A CP25A Special
General Arrangement

19-SEP-05	1	FIRST ISSUE	
DATE	ISS	CHANGE	E C REF
DRN	AR	Product / Ref:	A4
DRW NO.	501 459		SHT 1 OF 1