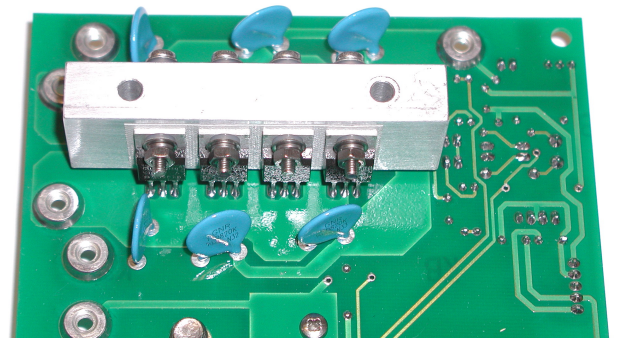
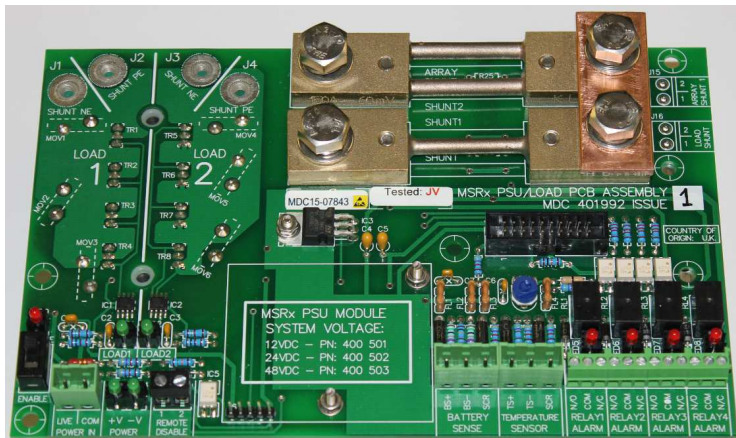


- PCB Assembly PN/Name: 401992 PCBA MSR_x PSU/Load (150/60A A/LSh) V2
 402104 PCBA MSR_x PSU/Load (200/60A A/LSh) Stackable V2
 402079 PCBA MSR_x PSU/Load (150/150A A/LSh) Stackable V2
 402075 PCBA MSR_x PSU/Load (No Shunts) Stackable V2
- Bare PCB Part Number: 301992-1
- First produced: 06-07-2015
- Dimensions: 120 x 190 x 50mm (nom)
- Weight (approx.): 0.35kg - 0.45kg
- Used on: MSR_x Charge Controller series (Version 2)
- Manufacturer: The Micha Design Company Limited
- Country of Origin/HS Code: United Kingdom / Commodity Code: 90328900
- Notes: Used on MSR_x series V2. (Stackable version of pcb 400446)
Includes dual Load switch and alarm relay connections.
- Status: Current version. In production.



Above photo shows PN 401992