



CPC25A with 4-20mA transducers in Painted Steel

The **CPC25A & CPC50A Cathodic Protection Controllers** feature microprocessor control, USB & RS485 Com Ports, Data Logging, 3 x User Programmable Alarm Relays, and Interrupt Timer function.

As an option, 3 x 4-20mA transducers (loop-powered) can be included, each of which is user programmable to provide isolated 4-20mA signals for Output Voltage, Output Current, and Half-Cell Voltage.

The 2x16 character alphanumeric LCD shows the Actual and Set-Point parameters of the unit: Output Voltage / Output Current / Half-Cell (Reference Electrode) Voltage. The keypad and rotary control allow access and adjustment of system parameters.

The controllers include GDT, MOV and Zener diode protection against lightning and other induced surges, as well as single-pole MCB protection on the input and output.

The CPC25/50A Controllers are available in Painted Steel, GRP or Stainless Steel enclosures.

**Operation:**

The CPC25/50A uses pulse-width-modulated (PWM) switching technology to obtain high efficiency conversion. They can operate in one of three modes: Constant Voltage, Constant Current and Half-cell (Reference Cell) Voltage control, with automatic changeover of control mode. The Half-Cell input can be sampled every 60 seconds (adjustable) with the input reverting to high impedance between sampling to prevent loading of the half-cell.

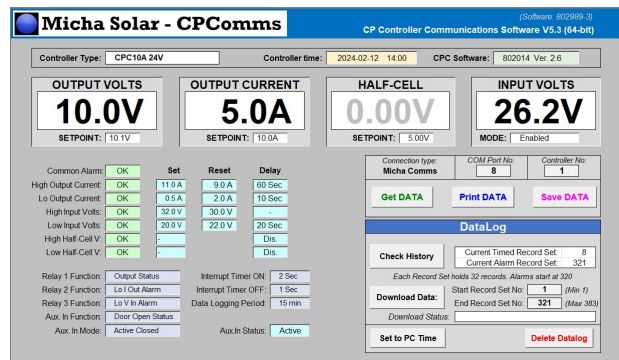
**Communications and Data Logging:**

A PC or laptop may be connected to the USB Port. All main parameters and the present status can be viewed. The main set points and relay settings can be monitored, and over 10,000 timed log events downloaded.

An RTU may be connected to the RS485 (or optional RS232) Com Port for MODBUS communication.

The logging period can be set to 15, 30, 60, 120 or 180 minute intervals.

Check the Micha website for CPC communication software.



**Main Specifications:**

Input Voltage Ranges:	12V System: 10V to 16V	24V System: 20V to 32V	48V System: 20V to 64V
Output Voltage:	0V to Input Voltage-0.5V	Adjustable in 0.1V steps	
Output Current:	0 to 25A or 50A	Adjustable in 0.1A steps	
Data Log Capacity:	Timed events: 10,208	Alarm events: 2,048	
Relay Functions: (Programmable)	Low Input Volts Low Output Current High Output Current	System Normal System Disabled Auxiliary Input Active	Common Alarm
Interrupt Timer settings:	On: 1 to 9,999 seconds	Off: 1 to 9,999 seconds	
Optional 4-20mA Transducers:	Loop voltage: 10VDC to 24VDC (maximum burden at 24V: 560R approx.)		
Enclosure rating:	Painted Steel IP66	Stainless Steel IP66	GRP IP66
CPC25A Enclosure dimensions:	600H x 400W x 200D	610H x 406W x 205Dmm	645H x 435W x 250Dmm
CPC50A Enclosure dimensions:	600H x 600W x 200D	610H x 610W x 205Dmm	645H x 435W x 250Dmm